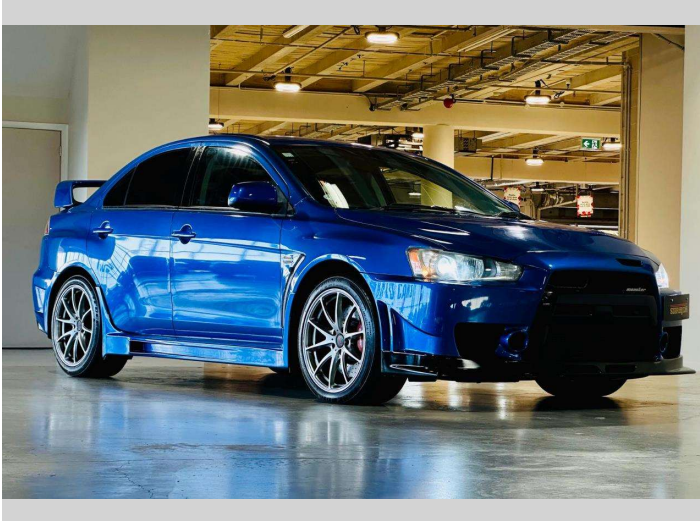


2011 Mitsubishi Lancer GSR Evolution 10 4WD



Purchase Price

\$48,762

Includes GST, Registration & Licensing

Indicative repayments

\$205.85 per week*

Based on a 60 month term & 15% deposit.
Total repayments (260) = **\$60,836.28**



Gain peace of mind with
Mechanical Breakdown
Insurance. **Ask us how.**



Top features

- » Air Conditioning
- » Alloy wheels
- » Body Kit
- » Central Locking
- » Child seat anchor poin...
- » Electric Mirrors
- » Electric Mirrors (Retr...
- » Electric Windows
- » ETC
- » Face Lift Model
- » Fog Lights
- » Multifunction
- » Multifunction
- » PADDLE SHIFT
- » Power Steering
- » Rear Spoiler
- » Smart Key
- » Steering Wheel Control...

Body Style

4 door, Sedan

Odometer

92,046 km

Engine

2000 cc, Internal Combustion

Fuel Type

Petrol

Transmission

Auto

Wheels

-

VIN

7AT0CJ0DX22300525

Interior

Black - Grey

Safety



Based on 2023 UCSR rating
for 07-17 models

Reg No.

QSU673

Ext Colour

Metallic Blue

History

-

Seats

5 seats, Half Leather

CO2 Emissions

★ ★ ☆ ☆ ☆ ☆

246 grams/km

Energy Economy

★ ☆ ☆ ☆ ☆ ☆

Annual fuel cost of \$4,120
10.5L per 100km

Cost per year is an estimate based
on petrol price of \$2.80 per litre and
an average distance of 14000 km.
Emissions and Energy Economy
figures standardised to 3P WLTP.

Stock ID: 2205

Sterling Cars

Sterling Cars Mega Mall | Phone 0800 771 881 | Email
info@sterlingcars.co.nz
385 Mount Wellington Highway, Mount Wellington, Auckland 1060
www.sterlingcars.co.nz



★★★★★
4.51 | 454 reviews

* Sterling Cars Mega Mall is not a lender nor a financial adviser. Any amounts displayed should not be seen as an offer of finance or taken as financial advice. The interest rate, fees and loan term used in this calculation may not actually represent those available from lenders. Actual interest rates, fees and loan terms will vary per lender and are typically based on an assessment of your credit risk and responsible lending criteria. Any repayment amounts displayed are indicative only and have been calculated using several other indicative inputs. The interest rate used in this calculation is an arbitrary 9.95%, however exact interest rates vary per lender. The term of the loan used in this calculation is 60 month. Exact terms available vary per lender although options typically include 6, 12, 18, 24, 36, 48 and 60 months. This calculation also includes two typical mandatory fees charged by lenders. These are an account admin fee of \$1.80 per month (other payment frequencies may be available) and a one-off establishment fee of \$500.00. Typically, this fee can be paid upfront or, as in this calculation, be capitalised over the contract term, ie. included in the loan amount. These fees can vary per lender and other non-mandatory fees and charges may also apply. The total amount of repayments has been calculated by multiplying 260 weekly repayments (based on a 60 month term) by the weekly repayment amount of \$205.85 which equals \$60,836.28. This calculator does not consider any of your own personal circumstances and we strongly suggest you seek budgeting advice prior to committing to any loan contract. Responsible lending criteria and lender terms and conditions will likely apply to any finalised loan contract. Proof of security and/or vehicle insurance may also be required before proceeding.

Generated 04 February 2025 03:35